

# THE MINI SOLO

**TASK:**  
TO CREATE AND PERFORM A  
SOLO TO AN AUDIENCE

**WHEN:**

**LESSON:**

## The Subculture Student-devised Drama Solo Structure

**FACT:**

Performing on your own isn't as daunting and as scary as it may seem. In fact, it is often the most rewarding task of the year.

### SUBCULTURE (N)

A CULTURAL GROUP WITHIN A LARGER CULTURE, OFTEN HAVING BELIEFS OR INTERESTS AT VARIANCE WITH THOSE OF THE LARGER CULTURE.

#### CHARACTER

A Member of a subculture group

#### PERFORMANCE FOCUS

Create a Solo performance based on a character from your chosen Subculture.

Accepting life membership in \_\_\_\_\_ for her/his commitment to \_\_\_\_\_ your character expresses devotion and faithfulness to the subculture. To do this she/he:

- Re-creates a montage which depicts the evolution of their subculture.
- Recreates communal and/or individual rituals associated with their Subculture
- Creates an example of how their subculture enriches and diminishes the daily lives of the common people.

#### PERFORMANCE STYLE

Non-naturalism

#### PERFORMANCE TECHNIQUES

Multiple characters, locations and time.  
Exaggerated movement.

#### PERFORMANCE LENGTH

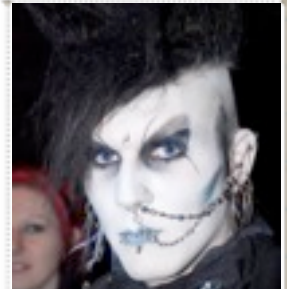
3 -4 minutes long.



Wog



Body builders



Goth

Skater, surfer, bkie,  
punk, youth culture,  
preppy, military,  
hip-hop, gym  
mothers, tweenie,  
gangster...

